



**AN GARDA SÍOCHÁNA**

**TRAFFIC PLAN INFORMATION**  
**FOR PAPAL VISIT TO KNOCK**

**THE VISIT OF HIS HOLINESS POPE  
FRANCIS TO KNOCK SHRINE IN THE  
MAYO GARDA DIVISION**

**ON THE 26TH OF AUGUST 2018**



## Travel Advice

We encourage people travelling to Knock Shrine on Sunday the 26<sup>th</sup> August to use **buses**, **rail** or **car pool** to travel to the event.

### **Private Buses**

There will be designated parking areas on the N17 for buses that travel to Knock Shrine. The advantage of travelling to the event by bus is that these patrons will have the **shortest distance to walk** to Knock Shrine via a short walkway from the N17 to the event site.

### **Train**

Iarnrod Eireann plan to operate special trains in addition to normal services. Bus Eireann will be operating shuttle buses between Claremorris Train Station and the outskirts of Knock Village. Please see the page 20 for the timetable or for further information: log on to [www.irishrail.ie](http://www.irishrail.ie) or contact Customer Care on 1-850-366222

### **Bus Éireann**

Knock is served by Bus Éireann routes 440 (Athlone – Knock, Westport – Castlebar - Knock), 421 (Swinford - Kiltimagh– Knock) and 64 (Galway – Knock - Sligo). In order to cater for anticipated demand additional services will operate on these routes on the 26th August, space will be limited. For further information, log onto [www.buseireann.ie](http://www.buseireann.ie) or contact 1850-836611

### **Carpool Parking**

We encourage carpooling as an alternative form of transport. There will be car parking available on the outskirts of Knock Village. Please note that there is a considerable walk from the car parks due to the size, scale and location of this event. There will be *no shuttle bus facility* available between the car parks and the event site.

### **Early Arrival**

We advise early arrival to ensure ease of access to Knock Shrine and ask that all persons travelling to the event to plan your return travel arrangements in advance.



# TRANSPORT INFORMATION



## **GARDA ADVICE**

There are four dedicated areas for car parking in the vicinity of Knock Shrine. Road closures are in place. There will be a Garda tow-away system in operation at Knock in relation to illegal parking.

## **ROAD CLOSURES**

N17 from Claremorris to Charlestown

From 12 midnight on Saturday 25<sup>th</sup> August 2018 until approximately 3pm on Sunday 26<sup>th</sup> August 2018

See next page for details.

## **PLAN YOUR JOURNEY**

### **Bus Eireann**

Throughout the weekend Bus Eireann services will continue to serve their existing network of stops in Knock. Shuttle services from Claremorris rail station will operate to and from the outskirts of Knock Village.

### **CAR:**

Please note the diversions in place for persons travelling to Knock Shrine.

## **PRIVATE BUSES**

- Private bus operators will have a designated parking area for patrons attending the papal visit. This is located on the N17.

## **1. N17 Road Closure**

- a. Diversions on N17 for motorists/HGV's.

## **2. Diversions on N17 for Departures or Arrivals from Ireland West Airport, Knock**

## **3. Knock Shrine Patrons**

The following diversions will be in place

### **a. Patrons travelling Southbound to Knock**

- From Donegal, Sligo, Northern Ireland

### **b. Patrons travelling Northbound to Knock**

- From Munster, South Galway, M6

### **c. Patrons travelling Westbound to Knock**

- From Longford, Roscommon, Ballyhaunis

### **d. Special Needs Car Parking**

- Parking tickets issued by World Meeting of Families only.

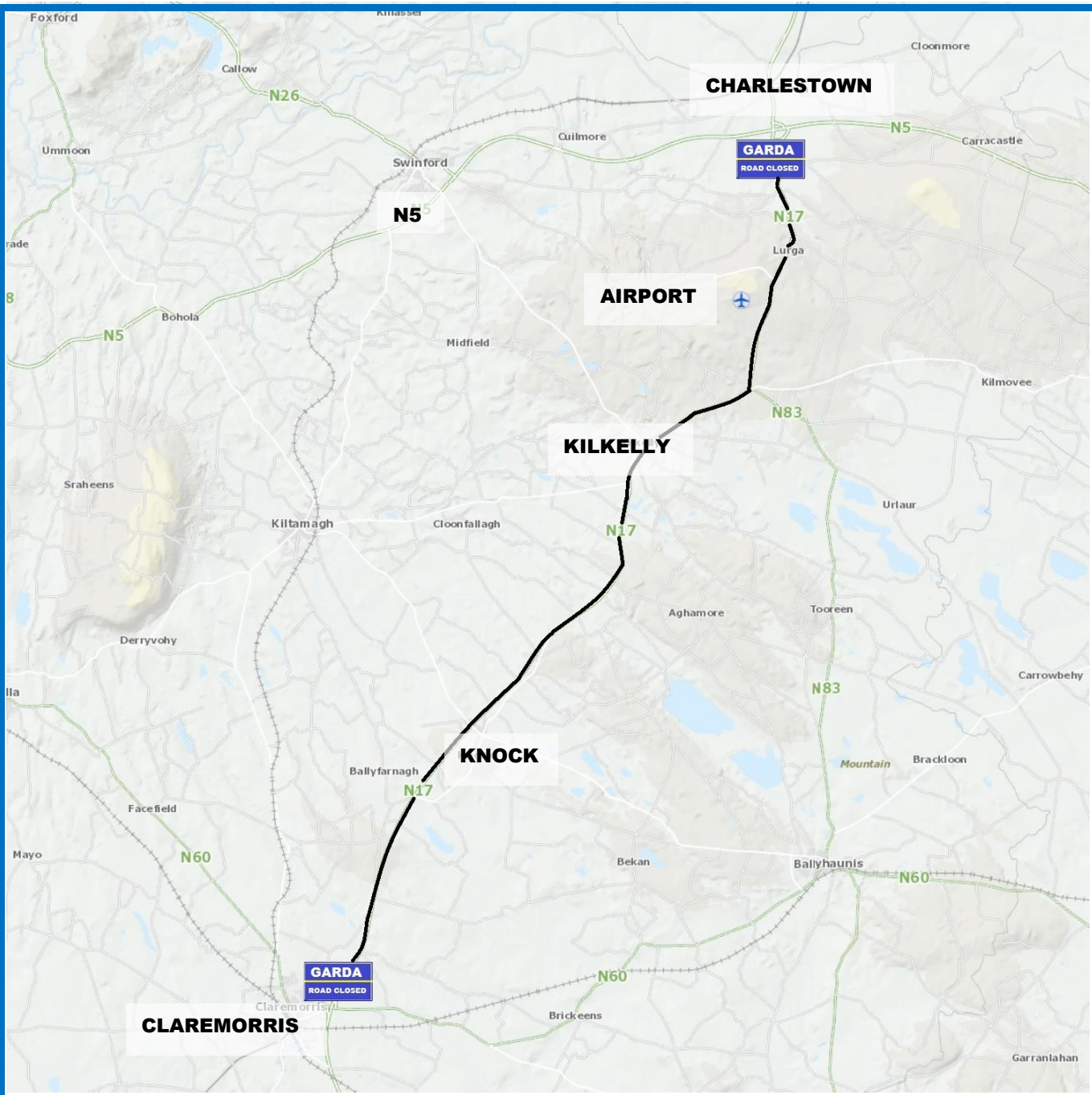
## **4. Bus Operators bring patrons to/from Knock**

# ROAD CLOSED – N17

N17 CLOSED –CHARLESTOWN TO CLAREMORRIS

LIMITED & LOCAL ACCESS ONLY

12 MIDNIGHT ON SATURDAY 25<sup>TH</sup> AUGUST  
TO  
3PM (APPROX) ON SUNDAY 26<sup>TH</sup> AUGUST



**Road Closures – N17 (30 KM)**

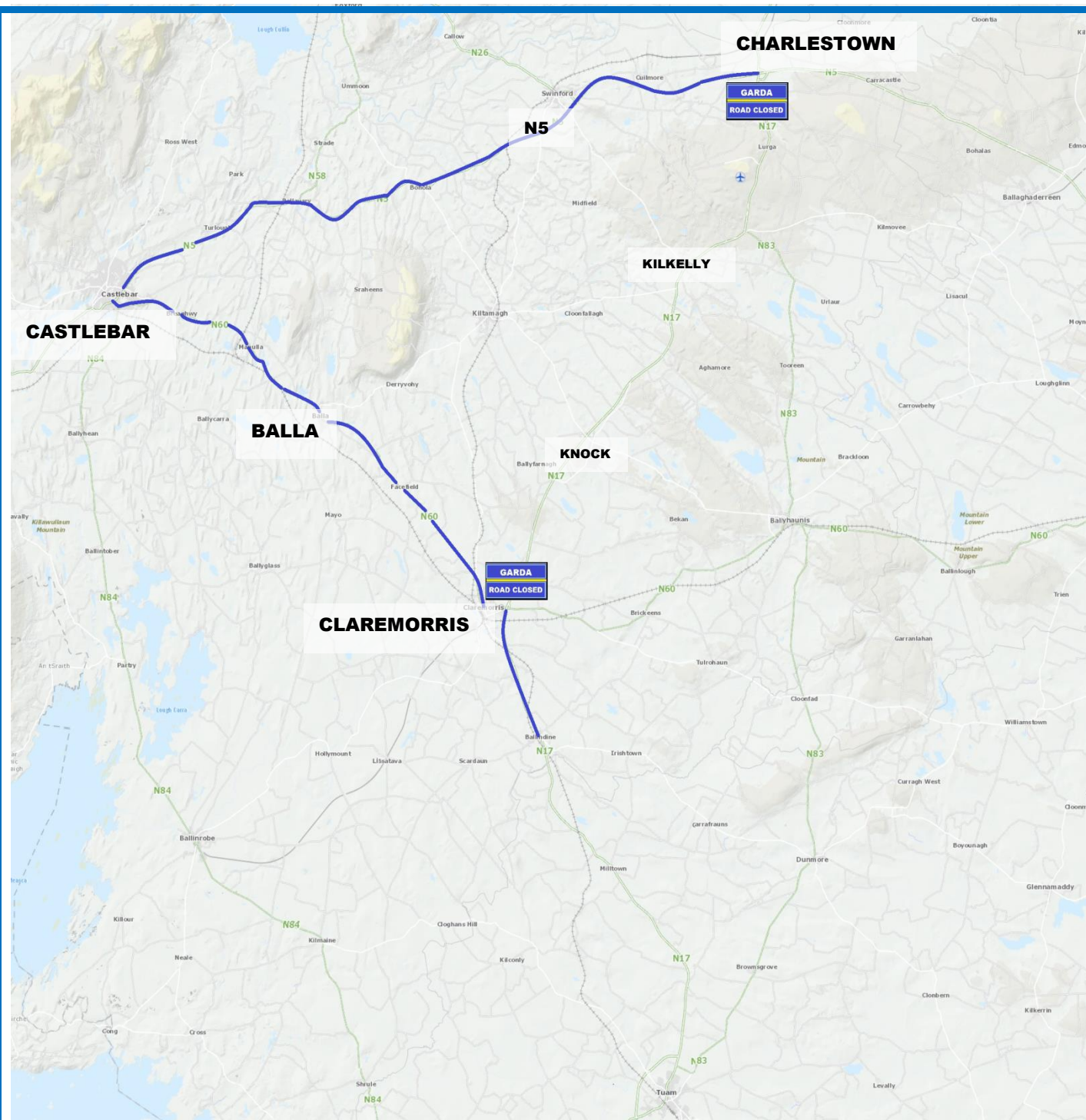
The traffic management plan will commence with the closure of the N17 at 12 midnight on Saturday 25<sup>th</sup> of August 2018 until approximately 3pm on Sunday 26<sup>th</sup> August. The N17 will be closed from Claremorris to Charlestown – 30 kilometres.

The N17 will have limited access from Claremorris to Knock - restricted to residents and ticket holders only for the visit of Pope Francis to Knock Shrine.

*Below are samples of the diversions signs that will be in place for motorists on Sunday 26<sup>th</sup> August.*







**Diversions in place due to closure of N17**

**CARS, 4X4'S**

Motorists intending to travel **NORTHBOUND** on the N17 are advised to:

- Divert in Claremorris onto the N60 to Castlebar. In Castlebar, turn right onto the R373 to Moneen. Turn right onto the N5 and rejoin the N17 at Charlestown.

Motorists intending to travel **SOUTHBOUND** on the N17 are advised to

- Divert at Charlestown onto the N5. At Moneen, Castlebar turn left onto the R373. Turn left onto the N60 and rejoin the N17 at Claremorris.

**HEAVY GOODS VEHICLES**

HGV's travelling NORTH are advised to travel on the N17 to Claremorris and turn off the N17 at the Old Ballindine Road into Claremorris and proceed on the N60 to Castlebar. In Castlebar, turn right onto the R373 to Moneen. Turn right for the N5 and rejoin the N17 at Charlestown.

Note: HGV's entering Ballyhaunis and intending to travel North will be diverted via Claremorris and proceed on the N60 to Castlebar, turning right for the N5 and and rejoining the N17 at Charlestown

**TRAVEL TIMES VIA N60 (without traffic)**

From Claremorris to Charlestown via Castlebar:  
55mins – 64km

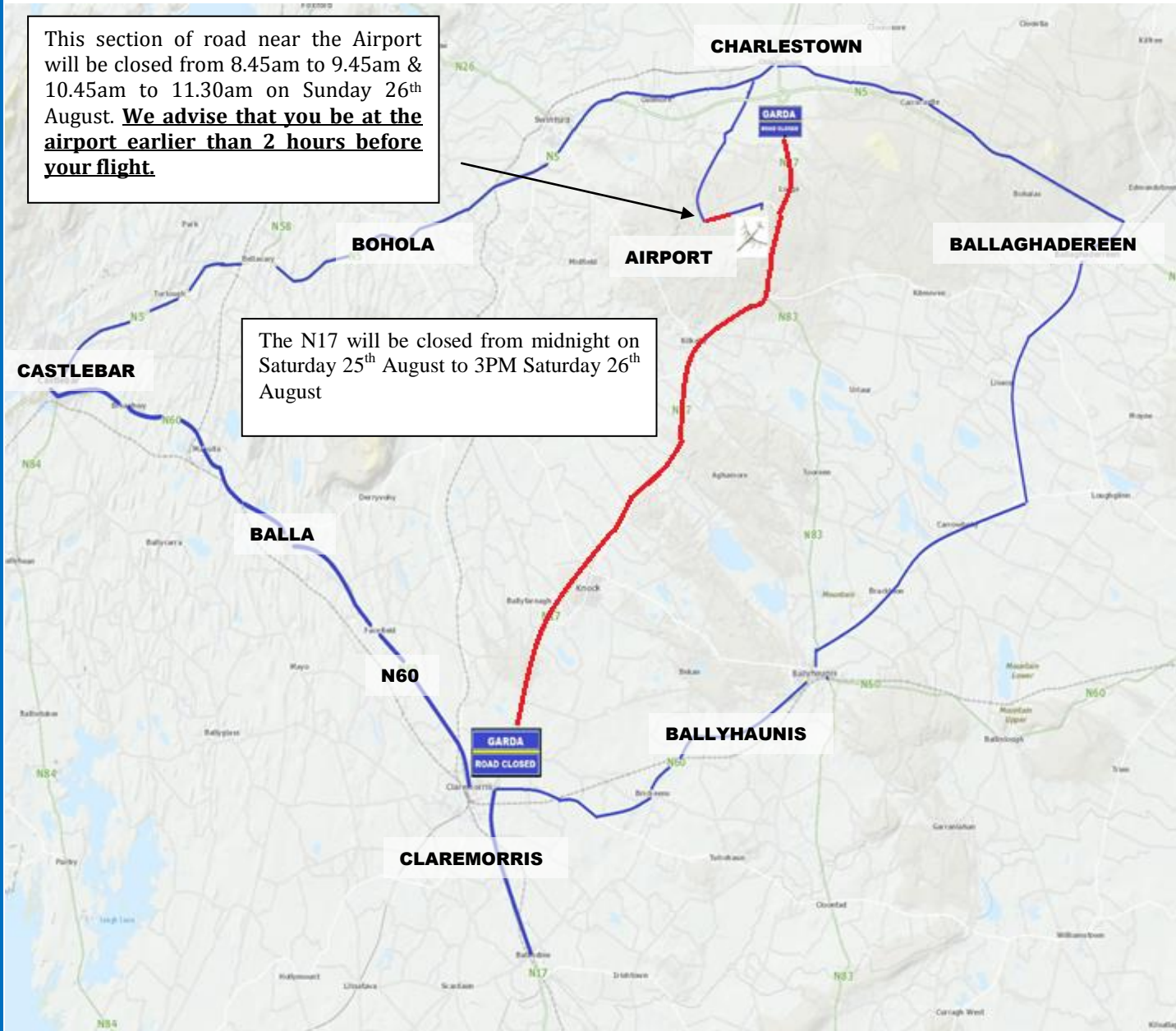


**Diversions on N17 for  
Departures/Arrivals  
to and from  
Ireland West Airport**



This section of road near the Airport will be closed from 8.45am to 9.45am & 10.45am to 11.30am on Sunday 26<sup>th</sup> August. **We advise that you be at the airport earlier than 2 hours before your flight.**

The N17 will be closed from midnight on Saturday 25<sup>th</sup> August to 3PM Saturday 26<sup>th</sup> August



### **Patrons travelling to Ireland West Airport, Knock**

#### **CARS, 4X4'S**

#### **FROM CLAREMORRIS**

Motorists intending to travel North to the Airport on the N17 are advised to divert in Claremorris onto the N60 to Castlebar.

#### **FROM CASTLEBAR**

In Castlebar, turn right onto the R373 to Moneen. Turn right onto the N5. Just after Swinford on the N5,, turn left at Cloonaghboy. Continue for 6.6km and turn right onto the Old Airport Road. Continue on for 6km. Turn left (Signpost Airport R376 and continue for 1.7km until you reach a roundabout. Take 2<sup>nd</sup> exit at the roundabout into Ireland West Airport

#### **FROM BALLAGHADEREEN**

Motorists intending to travel to the airport from Ballaghaderreen should travel on N5 and turn right onto the L1331 at Carracastle. Proceed to Charlestown and continue straight onto Chapel Street for 1km. Turn left onto the Old Airport Road. Continue on for 6km. Turn left (Signpost Airport R376 and continue for 1.7km until you reach a roundabout. Take 2<sup>nd</sup> exit at the roundabout into Ireland West Airport

#### **FROM SLIGO**

Proceed on the N17 to Charlestown and take a right onto Chapel Street. Drive for 1km. Turn left onto the Old Airport Road. Continue on for 6km. Turn left (Signpost Airport R376 and continue for 1.7km until you reach a roundabout. Take 2<sup>nd</sup> exit at the roundabout into Ireland West Airport

# Knock Shrine Patrons

The following diversions will be in place:

**a. Patrons travelling Southbound to Knock**

- From Donegal, Sligo, Northern Ireland

**b. Patrons travelling Northbound to Knock**

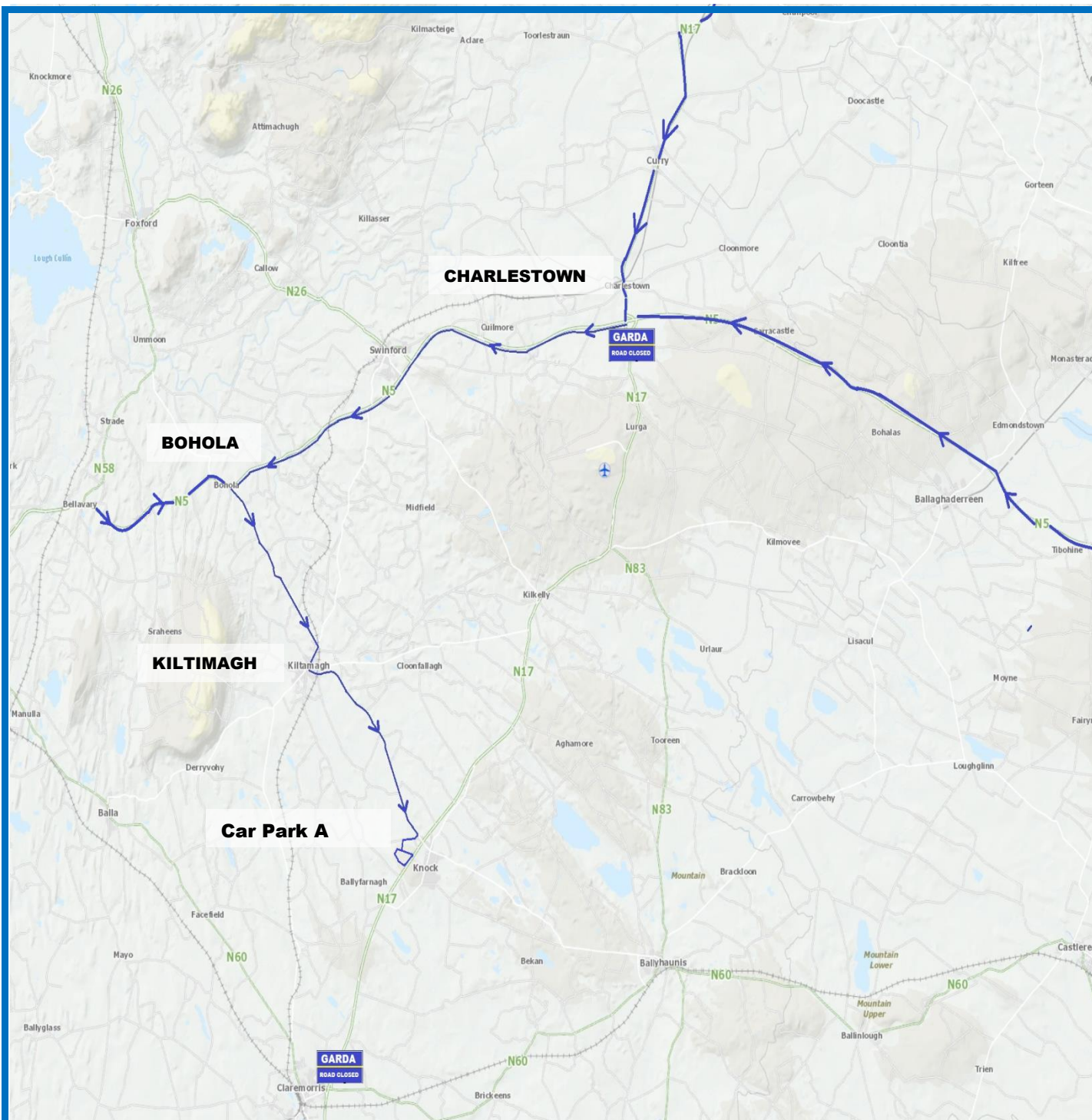
- From Munster, South Galway, M6

**c. Patrons travelling Westbound to Knock**

- From Longford, Roscommon, Ballyhaunis

**d. Special Needs Car Parking**

- Parking tickets issued by World Meeting of Families only.



**Patrons travelling Southbound to Knock**

The following people will be affected by road diversions:

**Donegal, Sligo, Leitrim, Cavan, Monaghan, , Louth Northern Ireland, North Mayo.**

Road Diversions will take place following the closure of the N17 from Claremorris to Charlestown – 30 kilometres. The road closure will be in effect from 12 midnight on Saturday 25<sup>th</sup> of August 2018 until approximately 3pm on Sunday 26<sup>th</sup> August.

Patrons traveling from the North to Knock Shrine on Sunday the 26<sup>th</sup> August will be directed along the N5 to Bohola, Turn off for R321 to Kiltimagh Proceed onto the R323 towards Knock. Turn right at Carrowmore Meadows and follow the signs to the **Car Park A**

**GPS COORDINATED (CAR PARK A)**

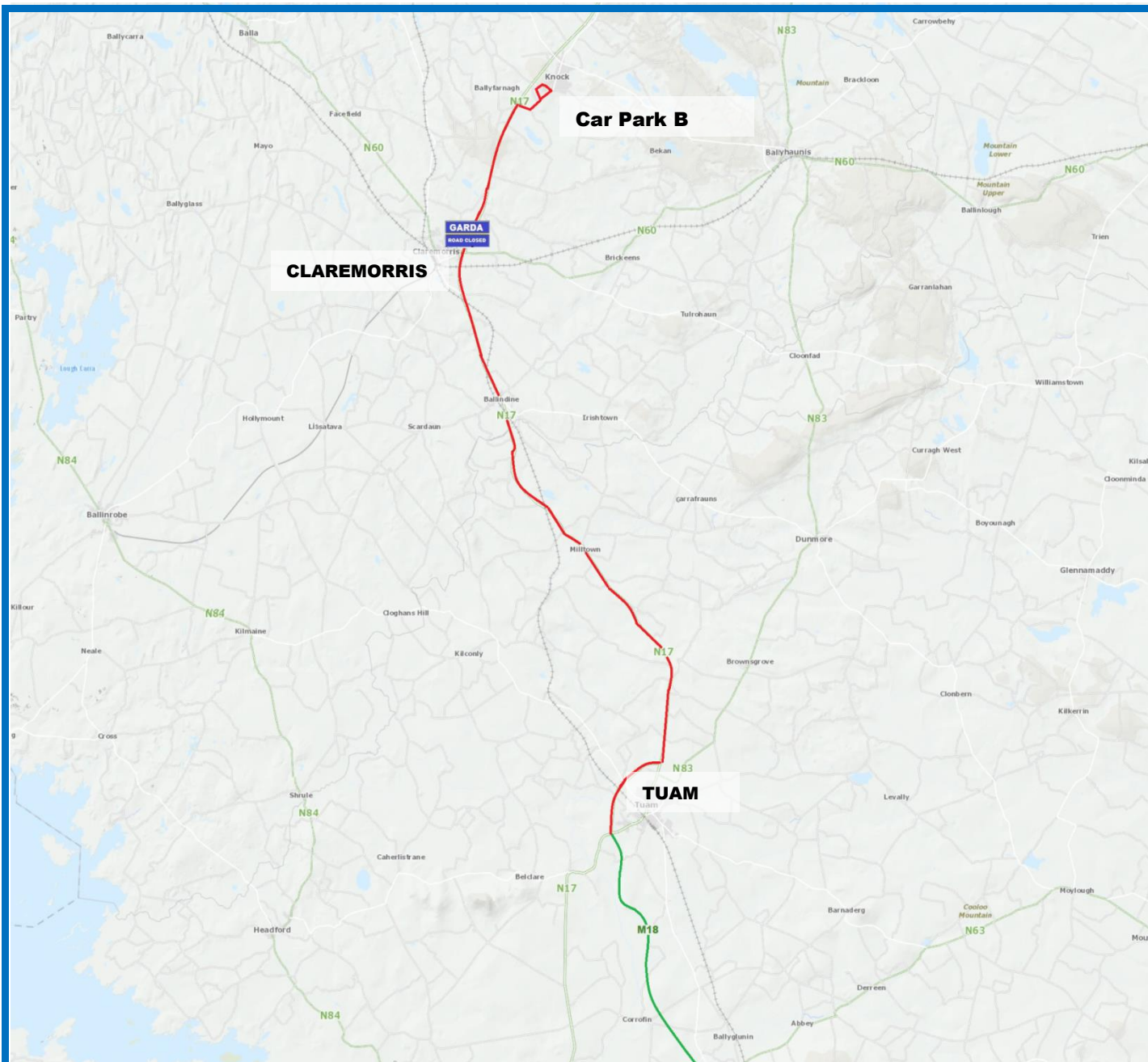
N 53° 47 55.446

W 8° 55 37.23.96

**TRAVEL TIMES VIA N5 (without traffic)**

From Charlestown: 30 mins – 35km





### **Patrons travelling Northbound to Knock**

The following people will be affected by road diversions: **Munster, Leinster, Galway, South Mayo.**

Road Diversions will take place following the closure of the N17 from Claremorris to Charlestown – 30 kilometres. The road closure will be in effect from 12 midnight on Saturday 25<sup>th</sup> of August 2018 until approximately 3pm on Sunday 26<sup>th</sup> August.

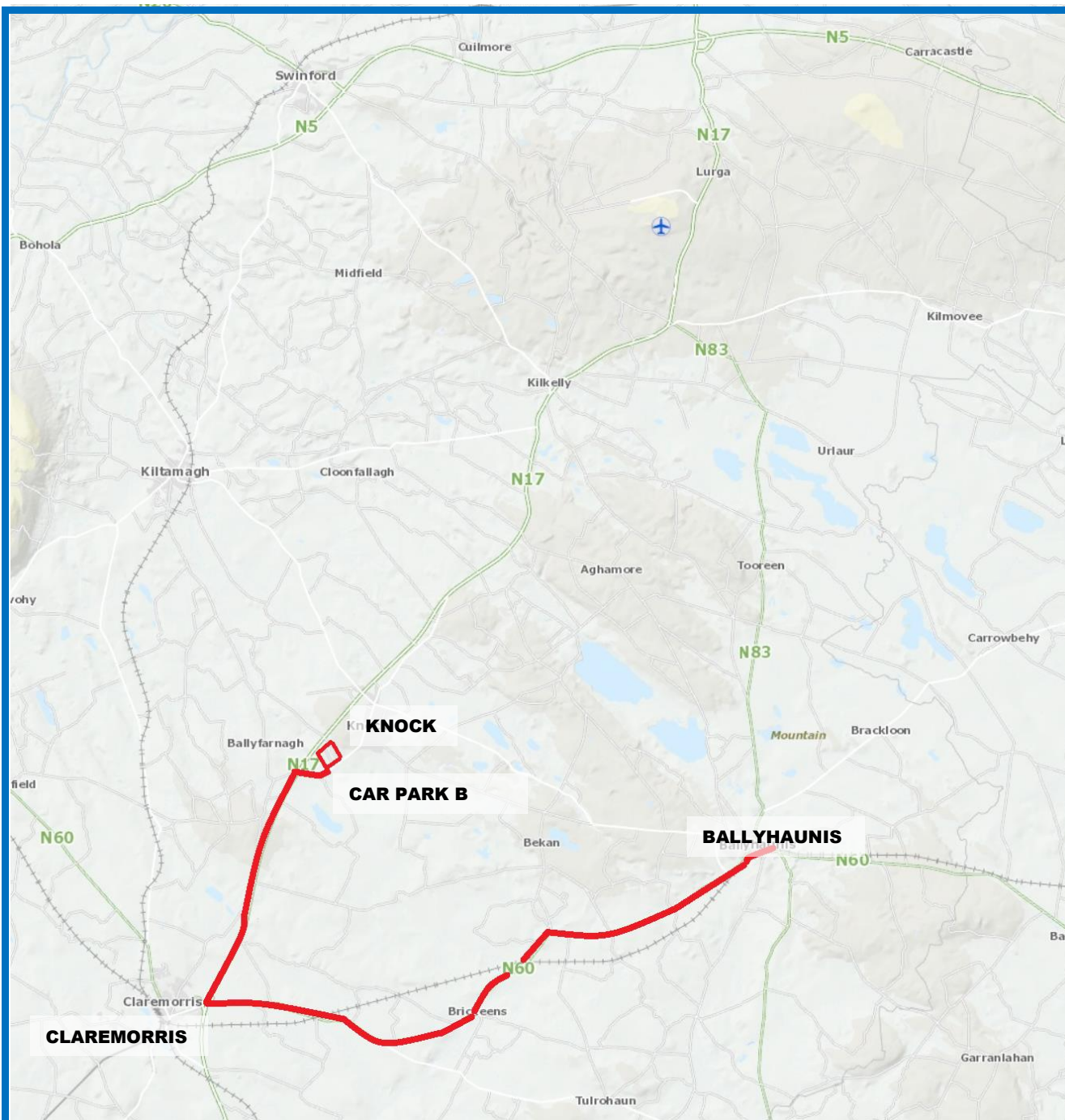
Patrons traveling from the South to Knock Shrine on Sunday the 26<sup>th</sup> August will only be allowed access onto N17 IF THEY AND **ALL PERSONS IN THE VEHICLE** HAVE A VALID TICKET.

Patrons who have tickets will proceed from Claremorris and travel north along the N17 to Knock. Turn right off the N17 onto the R329 at Ballyhowley. Proceed onto the R329 towards Knock. When approaching Knock follow the signs to the **Car Park B**

### **GPS COORDINATED (CAR PARK B)**

N 53° 46 54'6882''

W 8° 55 55' 9452''



### Patrons travelling Westbound to Knock

The following people will be affected by road diversions: **Roscommon, East Galway, Leinster.**

Road Diversions will take place following the closure of the N17 from Claremorris to Charlestown – 30 kilometres. The road closure will be in effect from 12 midnight on Saturday 25<sup>th</sup> of August 2018 until approximately 3pm on Sunday 26<sup>th</sup> August.

Patrons who have tickets will proceed at Ballyhaunis onto the R60 towards Claremorris. At Claremorris, go North onto the N17. Follow the signs to the **Car Park B**

### **GPS COORDINATED (CAR PARK B)**

N 53° 46 54' 6882''

W 8° 55 55' 9452''



# TRAVEL ARRANGEMENTS FOR PERSONS WITH SPECIAL NEEDS

- Please note that given the unique scale of this event, subject to available space and resources, a limited number of tickets will be available by the World Meeting of Families **FOR SPECIAL NEEDS PARKING TICKETS**'.

## TO AVAIL OF THIS CAR PARK - YOU MUST HAVE A TICKET FROM THE WORLD MEETING OF FAMILIES

- WMOF2018 is currently engaged with special needs organisations in relation to the provision of supported access for those who would like to attend the event at Knock Shrine
- PLEASE NOTE that holders of the blue disabled drivers permit ALONE cannot be facilitated in this car park, as there are limited tickets available. They must avail of the Car Park A or Car Park B.



- Other persons with special needs are advised to travel to and from Knock Shrine by wheelchair accessible taxi.
- Early bookings of wheelchair accessible taxis are advised.

Please see following pages for directions and diversions in place to the dedicated special needs car park at Knock Shrine.



**FROM KILTIMAGH**

**DRIVE ON R323 AND APPROXIMATELY 200M BEFORE THE ROUNDABOUT, TAKE A RIGHT TURN.**

**SPECIAL NEEDS CAR PARK 400M AHEAD**

**KILTIMAGH RD**

**FROM N17**

**DRIVE PAST R323 SLIP ROAD FOR KNOCK WHICH IS CLOSED.**

**TAKE NEXT RIGHT AND DRIVE 600M TO THE ROUNDABOUT. AND TAKE 3<sup>RD</sup> EXIT.**

**DRIVE 200M AND TAKE A LEFT TURN.**

**SPECIAL NEEDS CAR PARK 400M AHEAD**

**ROAD CLOSED**

**N17**

**SPECIAL NEEDS CAR PARK**

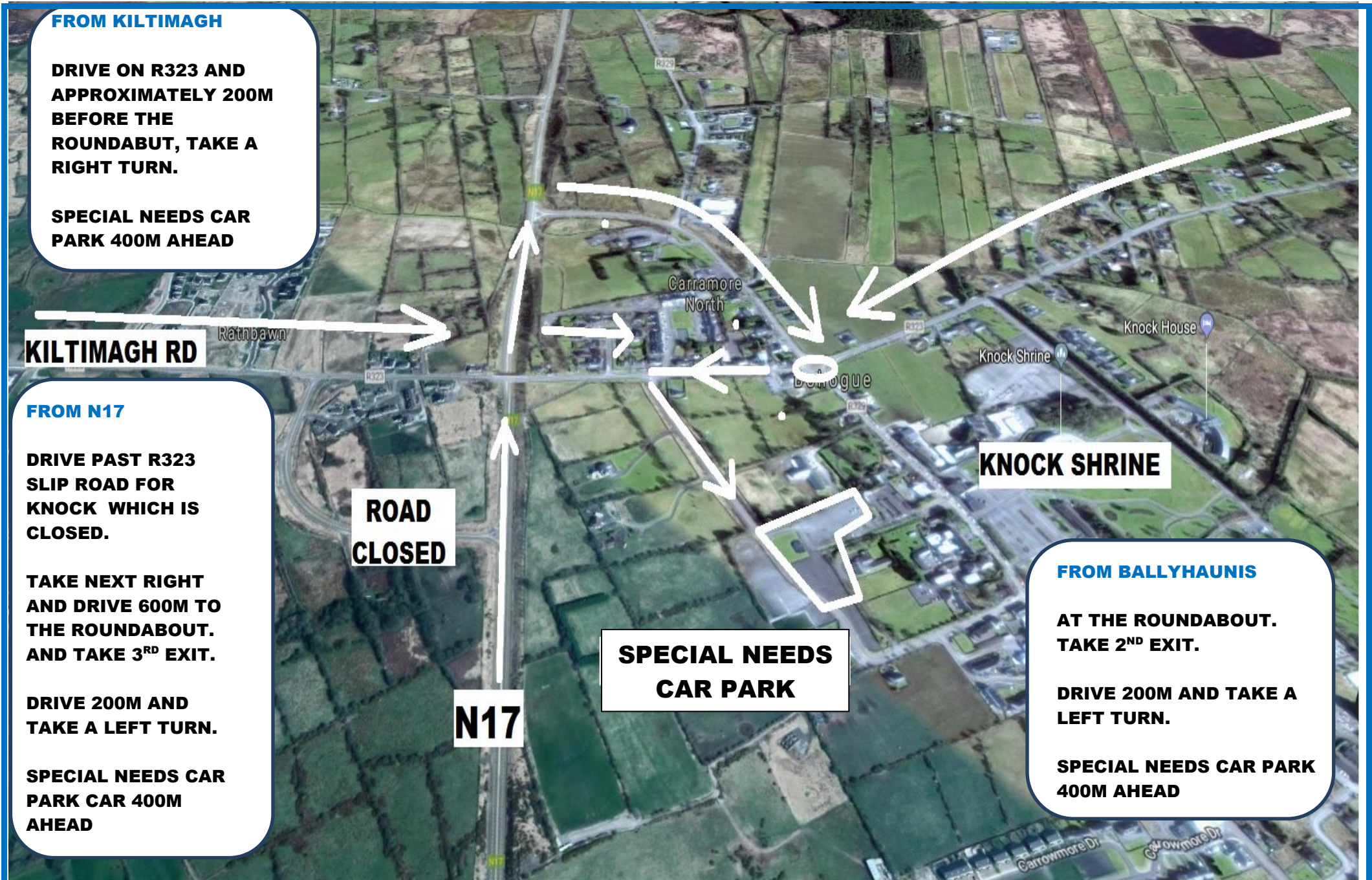
**KNOCK SHRINE**

**FROM BALLYHAUNIS**

**AT THE ROUNDABOUT. TAKE 2<sup>ND</sup> EXIT.**

**DRIVE 200M AND TAKE A LEFT TURN.**

**SPECIAL NEEDS CAR PARK 400M AHEAD**



# **Bus Operators bringing patrons to/from Knock**



# PRIVATE BUS OPERATORS

<b><u>PRIVATE BUS PARKING</u></b>	<b>DESIGNATED AREA @ N17</b>	
-----------------------------------	------------------------------	---

- **BUS OPERATORS TRAVELLING FROM DONEGAL, SLIGO, NORTH MAYO, NORTHERN IRELAND**

Bus OPERATORS traveling to Knock Shrine on Sunday the 26<sup>th</sup> August will be diverted at Charlestown onto the N5. At Moneen, Castlebar turn left onto the R373. Turn left onto the N60 and re-join the N17 at Claremorris. Proceed onto the N17 towards Knock. Parking for buses will be on the hard shoulder on the **WEST** side of the N17 facing North.(Eliminates requirement to turn on N17)

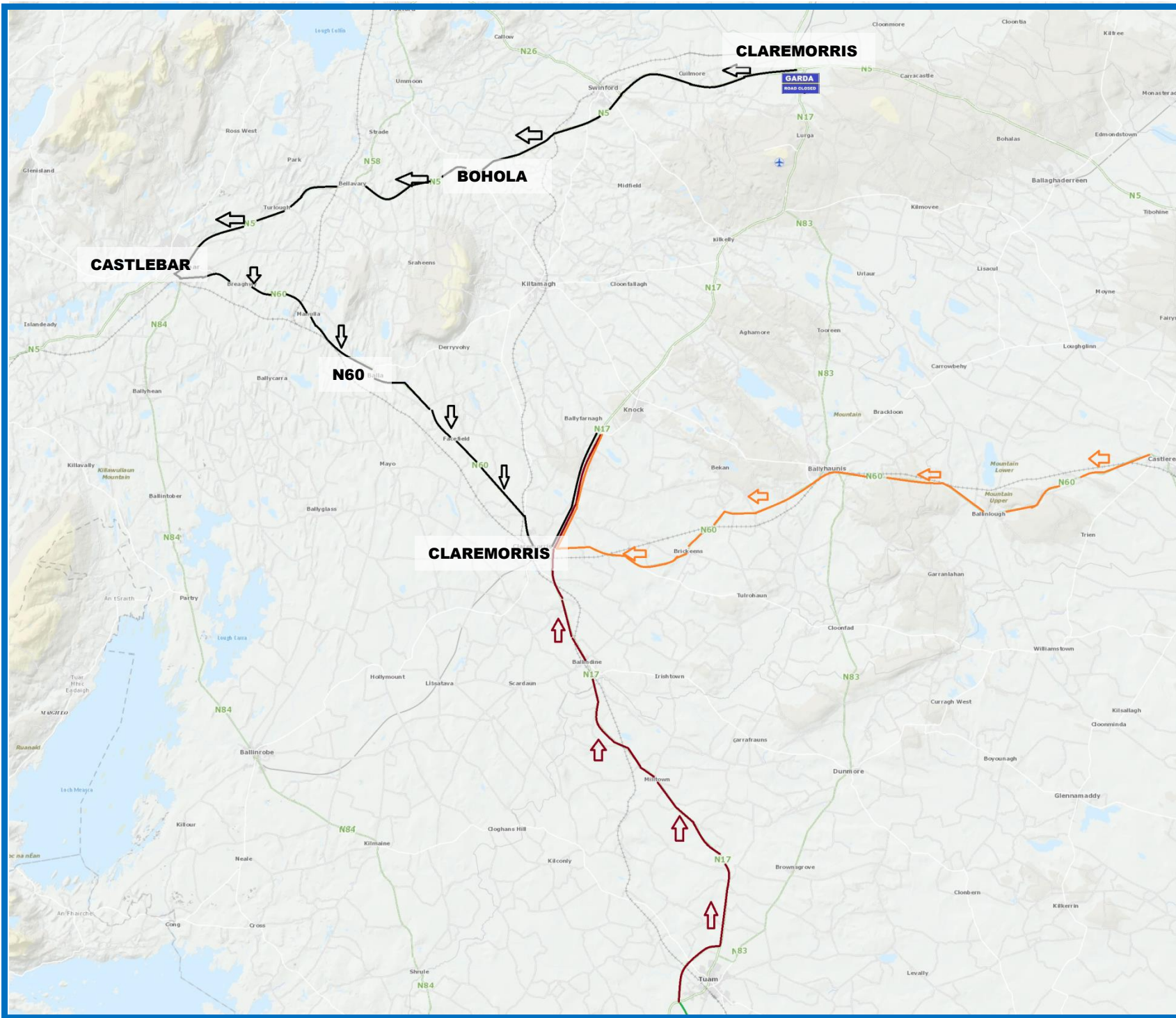
- **BUS OPERATORS TRAVELLING FROM MUNSTER, GALWAY,**

Bus Operators will proceed from Claremorris and travel north along the N17 to Knock. There will be a designated turning point for these buses on the N17 at the Cloondace. Buses will turn and parking will be on the hard shoulder on the **EAST** side of the N17 facing South.

- **BUS OPERATORS TRAVELLING FROM ROSCOMMON, EAST GALWAY, LEINSTER**

Bus OPERATORS traveling from Ballyhaunis to Knock Shrine on Sunday the 26<sup>th</sup> August will be diverted along the N60 to Claremorris Proceed onto the N17 towards Knock. Parking for buses will be on the hard shoulder on the **EAST** side of the N17 facing South.





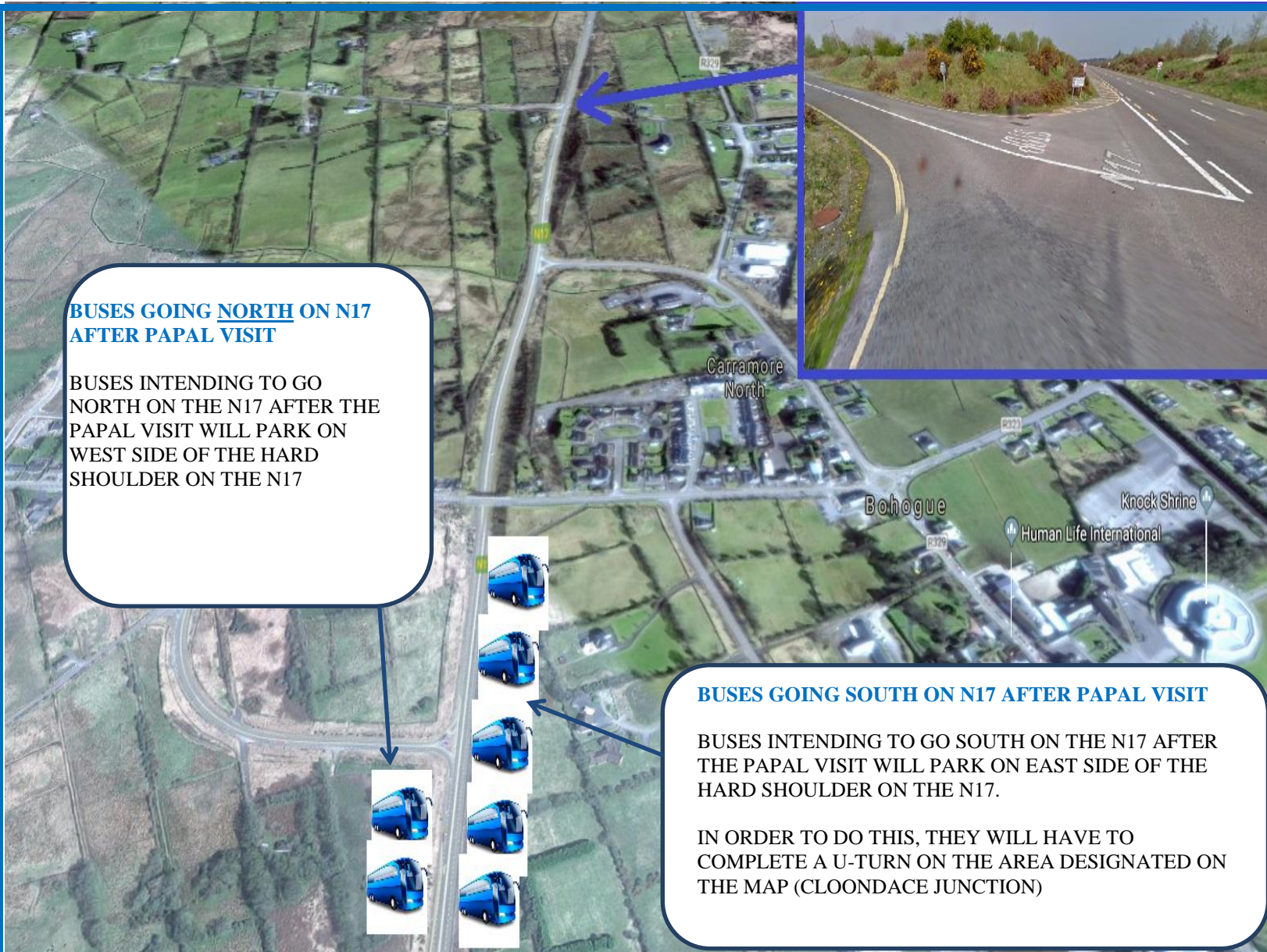
**Road Closures.**

**BLACK ROUTE  
BUS OPERATORS  
TRAVELLING FROM  
DONEGAL, SLIGO, NORTH  
MAYO, NORTHERN IRELAND**

**MAROON ROUTE  
BUS OPERATORS  
TRAVELLING FROM  
MUNSTER, GALWAY,**

**ORANGE ROUTE  
BUS OPERATORS  
TRAVELLING FROM  
ROSCOMMON, EAST  
GALWAY, LEINSTER**





**BUSES GOING NORTH ON N17 AFTER PAPAL VISIT**

BUSES INTENDING TO GO NORTH ON THE N17 AFTER THE PAPAL VISIT WILL PARK ON WEST SIDE OF THE HARD SHOULDER ON THE N17

**BUSES GOING SOUTH ON N17 AFTER PAPAL VISIT**

BUSES INTENDING TO GO SOUTH ON THE N17 AFTER THE PAPAL VISIT WILL PARK ON EAST SIDE OF THE HARD SHOULDER ON THE N17.

IN ORDER TO DO THIS, THEY WILL HAVE TO COMPLETE A U-TURN ON THE AREA DESIGNATED ON THE MAP (CLOONDACE JUNCTION)

**Bus Operator Parking.**

**BUSES TRAVELLING NORTH ON N17 FOLLOWING THE CONCLUSION OF THE PAPAL VISIT**

Bus operators who are travelling **NORTH** on the N17 will position their buses on the hard shoulder on the **WEST** side of the N17. (FACING NORTH)

**BUSES TRAVELLING SOUTH ON N17 FOLLOWING THE CONCLUSION OF THE PAPAL VISIT**

Bus operators who are travelling **SOUTH** on the N17 will position their buses on the hard shoulder on the **EAST** side of the N17. (FACING SOUTH)

These buses will initially travel NORTH to the Knock exit on the N17 and turn their buses at the designated area assigned on the map. They will then park there buses of the **EAST** side of the N17. (FACING SOUTH



## **TRANSPORT INFORMATION**

**PAPAL VISIT SUNDAY 26<sup>TH</sup> AUGUST 2018**



<b><u>TRAIN</u></b> Iarnród Éireann	<b>CLAREMORRIS RAIL STATION</b> <b>MAYO</b>	
--	--	---

### **Pre Papal Visit**

<b>Depart from Westport</b>	<b>Arrive at Claremorris</b>	<b>Journey Time</b>
6:10am	6:45am	35 min
7:50am	8:25am	

### **Post Papal Visit**

<b>Depart from Claremorris</b>	<b>Arrive at Athlone</b>	<b>Journey Time</b>
1:35pm	2:50pm	1hr 15 mins
1:55pm	3:10pm	
<b>Depart from Claremorris</b>	<b>Arrive at Westport</b>	<b>Journey Time</b>
2:00pm	2:40pm	40 min
4:26pm	5:06pm	

Patrons can **pre-purchase** train tickets on-line from all locations to CLAREMORRIS Station, Mayo through [www.irishrail.ie](http://www.irishrail.ie).

Bus Éireann will be operating shuttle buses **TO AND FROM** Claremorris to the outskirts of Knock Village.

For further information: log on to [www.irishrail.ie](http://www.irishrail.ie) or contact Customer Contact Centre **1-850-366222**



# TRANSPORT INFORMATION

PAPAL VISIT SUNDAY 26<sup>TH</sup> AUGUST 2018



<b>BUSES</b> Bus Eireann	<b>KNOCK VILLAGE</b>	
-----------------------------	----------------------	---

ORIGIN	DEPART	DESTINATION	ARRIVE
Athlone	6:45am	Knock	08:35
Westport	06:55	Knock	08:15
Swinford	09:05	Knock	09:30
Galway	06:00	Knock	07:10
Sligo	06:00	Knock	07:10

Knock is served by Bus Éireann routes 440 (Athlone – Knock, Westport – Castlebar - Knock), 421 (Swinford - Kiltimagh– Knock) and 64 (Galway – Knock - Sligo).

In order to cater for anticipated demand additional services will operate on these routes on the 26th August, space will be limited. For further information, log onto [www.buseireann.ie](http://www.buseireann.ie) or contact **1850-836611**

<b><u>TAXIS / HACKNEYS</u></b>	<b>DESIGNATED AREA @ N17 NEAR KNOCK EXIT</b>	
--------------------------------	--	---

- Taxi drop off point is located near the West side of the Hard Shoulder on the N17 near the Knock exit.
- Taxi **pick-up** post-papal visit will be at the same location also.



# PAPAL VISIT INFORMATION

Please note the PAPAL VISIT TO KNOCK IS **SOLD-OUT**.

This event is taking place outdoors at Knock Shrine. Every adult and every child in attendance will require a ticket to access the Knock Shrine domain on 26th August 2018. Under 18s must be accompanied by an adult. All tickets will be for standing sections.

## *Prepare for a big journey*

Allow yourself plenty of time to reach the venue. While there will be walking involved, there will be rest areas along the route for your comfort.

Some walking is unavoidable due to the size, scale and location of this event.

Please note that this is a standing event only.

Seek medical advice if you have any concerns about your ability to participate in an event of this scale.

**Any questions you may have on the Papal visit to Knock Shrine, may be answered on the following link. <https://www.worldmeeting2018.ie/en/Tickets/FAQs>**

\*\*\*\*\*

Please email the promoter directly on [info@worldmeeting2018.ie](mailto:info@worldmeeting2018.ie) and a representative will assist you and answer **any other REMAINING queries**.

Contact details for the World Meeting of Families 2018. are below:

**WMOF2018 Office**  
**Holy Cross Diocesan Centre,**  
**Clonliffe Road, Dublin 3, Ireland**  
**Tel.: +353 1 567 6800**