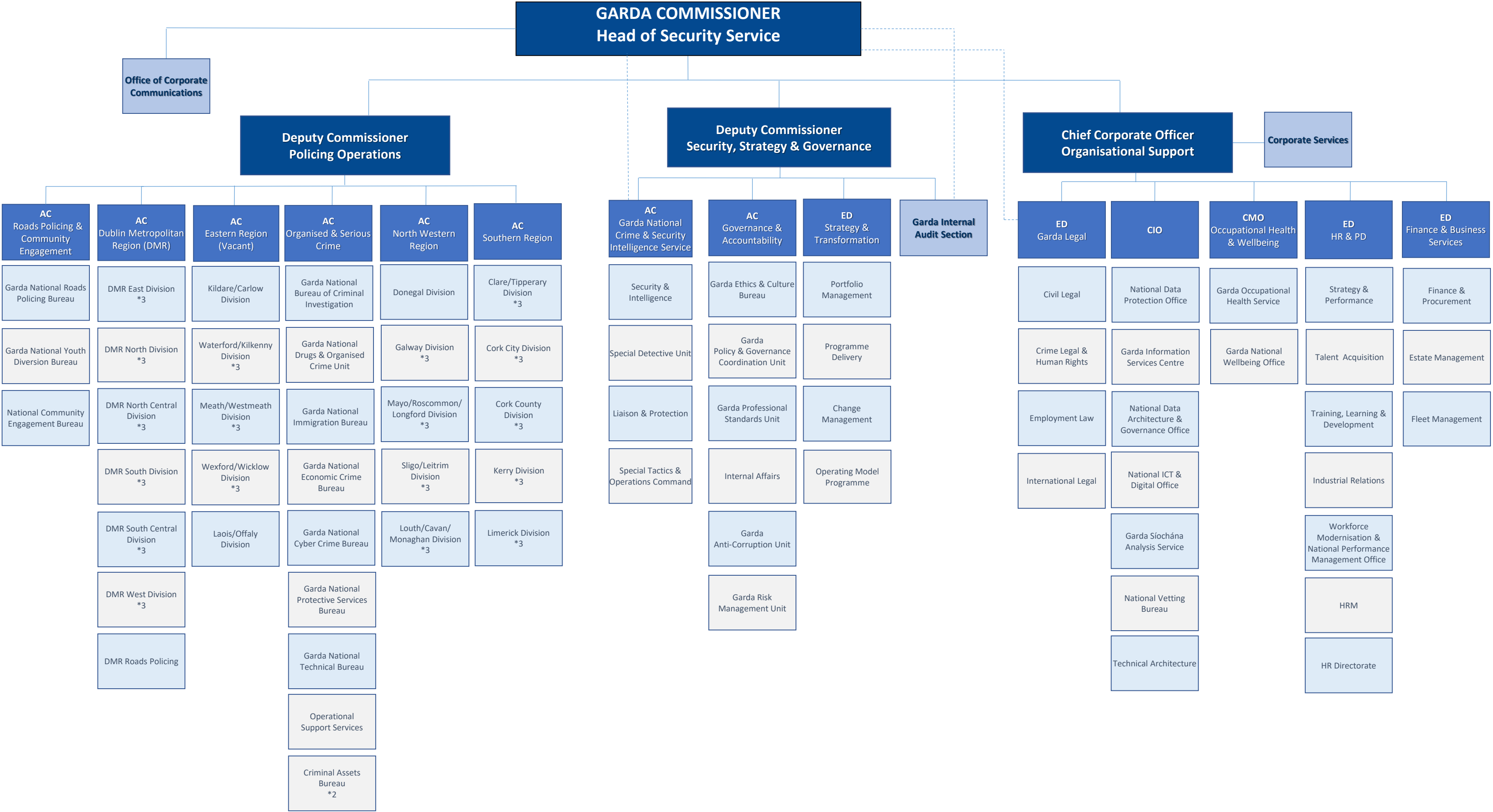


NATIONAL ORGANISATIONAL STRUCTURE



**Notes:**

- \*1.** Correct as of December 2024 v2.5. Any Subsequent changes will be incorporated into future iterations.
- \*2.** The multi-agency Criminal Assets Bureau (CAB) interacts with the Garda Commissioner and the AC Organised & Serious Crime.
- \*3.** Operating Model Divisions.