

# An Garda Síochána

## Crime Prevention Information Sheet



# Vehicle Security

## Motorcycles & Scooters



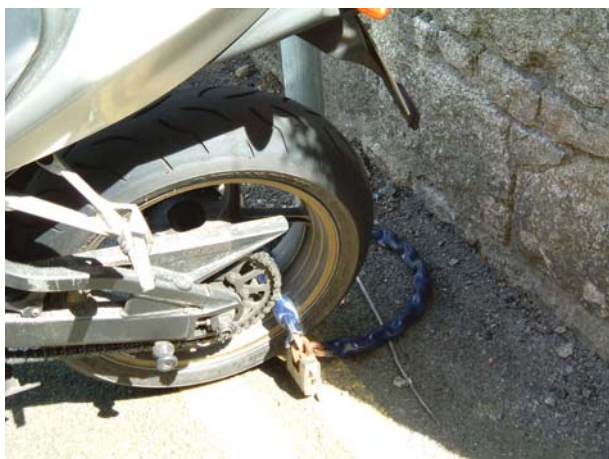
### Introduction

Figures from the Department of Transport show that there was just over 37,000 motorcycles registered in Ireland in 2007. In that same year, Garda statistics indicate that approximately 750 motorcycles and scooters were stolen. Of these, around 370 were recovered with 380 still outstanding.

It is important, therefore, to take adequate security precautions to protect your vehicle from being stolen.

### Locking

- Always lock your ignition and remove the key.
- Lock the forks and/or disc brakes.
- If riding with others, lock all bikes together when parked and not in use.
- If riding alone, lock your bike to a solid, secure and immovable object, where possible.
- Avoid letting the lock and/or chain/cable rest on the ground as doing so can aid the thief by providing a solid surface on which to pound or pry the lock. Keep the chain/cable as tight as possible on your bike.
- Always use high security quality locks, chains and cables.



Example of poor locking technique - resting on the ground

### Parking

#### At Home -

- Try to park in a secure location such as a garage, shed or enclosed yard. Make sure that these locations are themselves secure.
- Even at home, always lock your bike.
- Consider installing ground or wall anchors for this purpose.
- If parking in a garage, block your bike with cars if available.
- It is also important not to leave tools lying around your garage that might help a thief to attack your bike locks e.g. an angle grinder, lump hammer, cold chisel etc. All tools should be securely locked away.

#### Away from Home -

- Try to park in busy, well-lit parking areas.
- Avoid parking between cars or other large vehicles as they can provide cover for the thief and may also prevent passers-by from noticing anything suspicious happening.
- When parked in public places, check your bike frequently.
- Vary your parking spot in public areas as much as possible.
- Be inventive - consider removing the spark plug or the main fuse etc.

### Alarms and Immobilisers

An alarm can be beneficial to alert you that something is wrong. In any case, even if you do not install an alarm consider putting 'alarm stickers' on your bike e.g. 'Alarm Installed - Do Not Tamper'. These may help to deter the opportunist thief.

The use of immobilisers can also be beneficial. You should also consider installing one or more kill switches in concealed locations.

Remember, alarms and immobilisers should be regarded as enhancements to good physical security / locking systems.

FOR FURTHER INFORMATION ON THIS OR OTHER CRIME PREVENTION ISSUES,  
PLEASE CONTACT  
your local GARDÁ CRIME PREVENTION OFFICER  
or  
visit the Garda website at [www.garda.ie](http://www.garda.ie)

## Tracking Systems

The use of tracking systems has proved very effective in recovering vehicles that have been stolen and vehicles are generally recovered within hours of their taking.

If your bike is at the top of range, then you should give serious consideration to the use of a satellite tracking system.

## Property Storage

The storage compartment(s) on your bike should not be regarded as a safe place to store items. Do not leave valuable items therein.

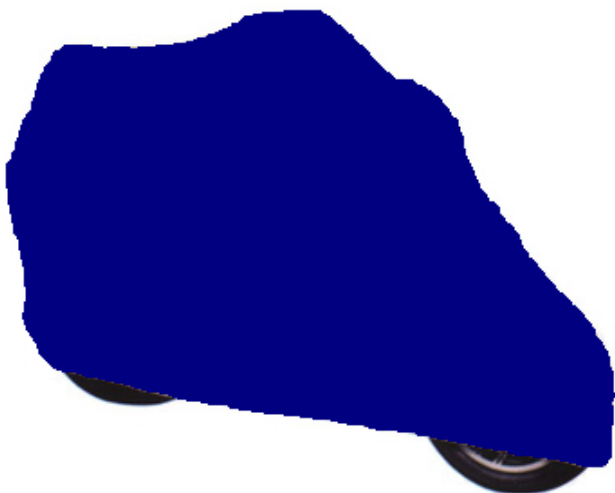
Important documents relating to your bike (e.g. insurance certificate, vehicle registration certificate) should not be stored in these compartments.

## Cover

A cover over your bike serves two functions - not only does it protect it from the elements but it also serves to stop prying eyes from seeing your precious possession. The casual passer-by will not know, without removing the cover, whether the bike underneath is a top class new sports bike or a well-used old machine.

Covers are generally more practical for parking at home but consideration should be given to their use when parking in public.

Consider using an old, worn and plain cover rather than a new expensive cover or one that identifies the manufacturer of the bike - you will likely draw less attention to the bike with the older, worn cover.



Plain, old cover

## Photograph and Record

- Consider uniquely marking your bike on various parts.
- Take note of all damage, scratches and indentations etc.
- Photograph your bike - take more than one, from different angles, show markings, scratches dents etc.

Photographs and notes taken should be kept in a safe location and, in the event of your bike being stolen, provided to Gardaí to assist in their investigation. They can also help to prove ownership when disputed.

## Selling your Bike

You should also be cautious when selling your bike. Thieves, posing as buyers, have been known to use false identities and documentation. With private sales, you should consider the following:

- Check the identity of the buyer - look for photo ID.
- Verify the address - look for utility bills etc.
- If the buyer is paying by cheque, draft or money order verify that it is valid and that sufficient funds are available.
- Don't hand over the bike or ownership documents until the cheque/draft/money order has cleared - you can always arrange to deliver it yourself after a given period.
- In general, be cautious.

***The advice contained in this information sheet is not intended to be exhaustive or absolute.***

***Nothing contained in this publication should be interpreted as mandatory, obligatory or designed to conflict with any statutory regulations.***

## Useful Contacts and Links

**The Garda National Crime Prevention Unit,**  
Garda H.Q., Harcourt Square, Dublin 2.  
Tel: (01) 6663362, Fax: (01) 6663314  
Email: [crime\\_prevention@garda.ie](mailto:crime_prevention@garda.ie)

**The Garda Stolen Motor Vehicle Investigation Unit,**  
NBCI, Garda H.Q., Harcourt Square, Dublin 2.  
Tel: (01) 6663320/5, Fax: (01) 6663347  
Email: [nbc\\_i\\_stolen\\_vehicle@garda.ie](mailto:nbc_i_stolen_vehicle@garda.ie)

**An Garda Síochána**  
[www.garda.ie](http://www.garda.ie)

**National Consumer Agency,**  
4 Harcourt Road, Dublin 2  
Tel: 1890 432 432 or (01) 4025555  
[www.consumerconnect.ie](http://www.consumerconnect.ie)

**The Society of the Irish Motor Industry,**  
5 Upper Pembroke Street, Dublin 2  
Tel: (01) 6761690 Email: [info@simi.ie](mailto:info@simi.ie)  
[www.simi.ie](http://www.simi.ie)

**AA Ireland**  
56 Drury Street, Dublin 2  
Tel: (01) 6179999 Email: [aa@aaireland.ie](mailto:aa@aaireland.ie)  
[www.aaireland.ie](http://www.aaireland.ie)